



COSTARCHEM

Performance As Promised

BROCHURE

Next Generation Solutions For Today's Construction



CONTENTS

01	ABOUT US	
	Costar is a world leader in the delivery of tailored Constructive Solutions for virtually any type of construction project, combining high quality products, expert technical support, customer service and innovation.	01
02	CONCRETE ADMIXTURES	
	Costar Building Product System manufacture a full line of concrete admixtures and complementary products for high quality concrete suitable for ready mix, precast/pre-stress, paving manufactured concrete products and dry mortar production	02
03	WATERPROOFING ADMIXTURES	
	Our waterproofing admixtures are specifically designed to become an integral part of the concrete for use in above and below the grade application to permanently waterproof your concrete	05
04	WATERPROOFING MEMBRANE	
	Our waterproofing membrane systems has been designed to solve all you concrete waterproofing needs producing 100% waterproofed concrete saving you millions in reduced labor and reduced maintenance cost and leaving you with concrete that lasts longer.	07
05	FLOORING	
	With our full line of flooring solutions, the beauty of epoxy flooring cannot be ignored if you want a perfect glossy and durable floor finish in your home garages, manufacturing facilities, auto workshop etc.	10
06	TILING SOLUTION	
	We offer a range of tiling solutions to suit your everyday tiling need. We have developed quality and innovative tiling solution.	14
07	REPAIR AND BONDING AGENT	
	Costar series of repair and bonding agents are specially formulated for repair/re-profiling of concrete, featuring good adhesion to substrates, rapid setting, and excellent standard finish	17
08	STRUCTURAL GROUT/GROUTS AND ANCHORS	
	We also developed series of cementitious structural grouts with excellent high early and ultimate strengths and durability	20
09	SURFACE TREATMENT	
	Costar Building products also manufacture supporting products for curing of concrete and releasing of formworks specifically designed to ensure smooth finish	21
10	EXPANSION JOINT SEALANT	
	Our versatile sealants and adhesives are specifically formulated to meet a variety of industrial bonding and sealing functions.	23
11	DAMPNESS, VAPOUR REMEDIATION & CORROSION PROTECTION	
	Damp proofing keeps moisture out of a building where vapour barriers keep interior moisture from getting into walls. Moisture resistance is not necessarily absolute.	24
12	DECORATIVE MORTAR	
	Costar offer ranges of decorative mortar utilized for the detailing of structure surfaces with conventional building feel in living arrangements, lodgings, and proficient premises. They are utilized to give wonderful appearance to external walls.	25
13	INSULATION	
	Costar thermal Insulation series are constantly endorsed as the most astute decision for comfortable, vitality effective private, industrial and commercial spaces.	26
14	WATERSTOP	
	Costar has both hydrophilic swellable and PVC waterstops with demonstrate history for being of premium quality and a cost effective solution for water containment needs.	26



ABOUT US

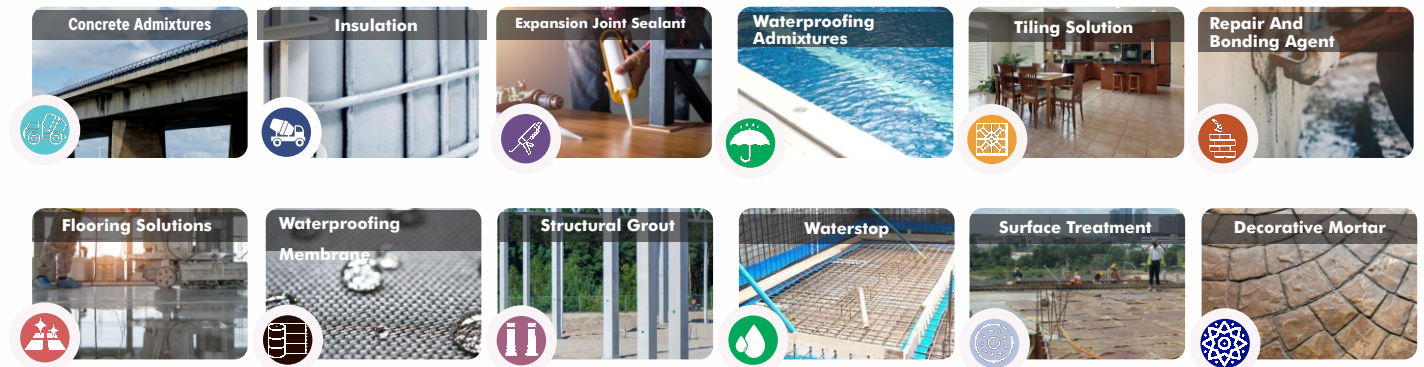


COSTARCHEM INC is a Global Construction Chemical products manufacturer with presence in the United States and several countries. CostarChem is a leader in the delivery of tailored constructive solutions for virtually any type of construction project, combining high quality products, expert technical support, customer service and innovation. COSTARCHEM also has a wide network and presence within the African continent with presence in Ghana, Cameroun, Côte d'Ivoire and Nigeria.

In COSTARCHEM, we try to understand Clients needs and challenges, then we offer products that match or resolve these problems. We have partnered closely with some of the biggest clients to solve and address clients challenges.

Our wide range of product covers: Concrete Admixtures, Waterproofing Systems, Tiling Solutions, Repair and Bonding, Structural Grouts, Sealants, Insulations, Surface Protection, Flooring, Curing and Release Agent.

From our concrete admixtures, curing compounds, evaporated retardants, flooring products, expansion joints, concrete sealers, repair mortars, structural grout and our extensive range of waterproofing products, Costar Building Products has all your construction needs covered. From highway construction to factory flooring, to waterproofing of commercial projects, Costar Building Products has been satisfying the needs of stakeholders in the building construction industry for decades. Our products are available worldwide through our network of authorized distributors and partners.





CONCRETE ADMIXTURES

Costar Building Product System manufacture a full line of concrete admixtures and complementary products for high quality concrete suitable for ready mix, precast/pre-stress, paving manufactured concrete products and dry mortar production.



HIGH RANGE SNF WATER REDUCING SUPERPLASTICIZER

COSTARMIX 200

Complete High Performance Water Reducing Superplasticizer. ASTM C494, Type D.



BENEFITS/APPLICATION

- Used to produce workable concrete with lower total water content and wherever high-quality concrete is required.
- Costamix 200 is also used for hot weather concreting
- Costamix 200 is used where delayed setting is required.
- Improved workability and pumping proper
- Chloride-free and suitable for pre-stressing

DOSAGE

Dosage is typically 1.2% - 2% to per wieght of cement

PACKAGE: 1000 litres tank, 210 litres drum, 20 litres keg

COSTARMIX 200M

Completer High Performance Water Reducing Superplasticizer. Sets within 9-12 hours. ASTM C494, Type A & F.



BENEFITS/APPLICATION

- inimizes risk of segregation and bleeding
- Improved workability, air entrainment and pumping properties
- Chloride-free and suitable for pre-stressing
- To produce high workability concrete requiring little or no vibration during placing..

DOSAGE

Dosage is typically 1.2% - 2% to per wieght of cement

PACKAGE: 1000 litres tank, 210 litres drum, 20 litres keg

COSTARMIX 200MS

Costarmix 200MS is a specially formulated chloride free, superplasticising SNF based polymer. ASTM C 494 Type A & F



BENEFITS/APPLICATION

- Major increases in strength at early ages without increased cement contents are of particular benefit in precast concrete, allowing earlier stripping times.
- Makes possible major reductions in water:cement ratio which allow the production of high strength concrete without excessive cement contents.
- Improved durability by increasing ultimate strengths.

DOSAGE

Typical dosage range is from 1.2% - 2% to per weight of cement

PACKAGE: 1000 litres tank, 210 litres drum , 20 litres keg

HIGH RANGE CONCRETE RETARDING & WATER REDUCING SUPERPLASTICIZER

COSTARMIX 200R

High ranged water-reducing and retarding superplasticizer ASTM C494, Type D & G.



BENEFITS/APPLICATION

- Improved workability, air entrainment and pumping properties.
- Chloride-free and suitable for pre-stressing
- Increased compressive and flexural strength of the concrete both at early and final stage.

DOSAGE

Dosage is typically 1.2% - 2% to per weight of cement

PACKAGE: 1000 litres tank, 210 litres drum, 20 litres keg

COSTARMIX 200MH

High Performance Water Reducing and Retarding Super Plasticizing Admixture with Higher initial Slump and Retention Time. ASTM C494, Type G



BENEFITS/APPLICATION

- High initial slump and retention time
- Improved workability, air entrainment and pumping properties
- To provide excellent strength at early ages and major increases in strength at all ages by significantly reducing water demand in a concrete mix.

DOSAGE

Dosage is typically 1.2% - 2% to per weight of cement

PACKAGE: 1000 litres tank, 210 litres drum, 20 litres keg

COSTARMIX 200DG

High Performance Water Reducing and Retarding Super Plasticizing Admixture with Higher initial Slump and Retention Time. ASTM C494, Type G



BENEFITS/APPLICATION

- Increasing water content.
- Improved compressive and flexural strength of the concrete both at early and final stage.
- Reduced dimensions of long term shrinkage and creep. Also minimizes risk of segregation
- Chloride-free and suitable for pre-stressing

DOSAGE

Dosage is typically 0.6 - 1.5% per weight of cement

PACKAGE: 1000 litres tank, 210 litres drum, 20 litres keg

*See technical datasheets for more in-depth information about the products

PCE ADMIXTURES

COSTARMIX 600

Fourth Generation high performance concrete pumping superplasticizer for mass concrete pours, long distance transport, pumped concrete. ASTM C494, Type G



BENEFITS/APPLICATION

- Costarmix600 is used in the production of high-performance precast and pre-stressed concrete by reducing significant amount of water
- Used to achieve high strength with improved workability and reduced w/c ratio.

DOSAGE

Dosage is typically 0.8% - 1.5% per weight of cement

PACKAGE: 1000 litres tank, 210 litres drum, 20 litres keg

COSTARMIX 600DG

4th generation high performance, slump retaining and water reducing super plasticizer. ASTM C494, Type G



BENEFITS/APPLICATION

- Improved workability and pumping properties
- Increased compressive and flexural strength of the concrete both at early and final stage.
- Costarmix 600DG is used in all concrete works where good workability and increased waterproofing properties are required such as sea walls, swimming pools, tunnels etc.

DOSAGE:

Dosage is typically 0.8 - 1.5% per weight of cement

PACKAGE: 1000 litres, 210 litres and 20 litres

COSTARMIX 300

Complete high performance water reducing superplasticizer. ASTM C494, Type F



BENEFITS/APPLICATION

- Reduced dimensions of long term shrinkage and creep. Also minimizes risk of segregation and bleeding
- Improved workability, air entrainment and pumping properties
- Used in all concrete works where good workability is required

DOSAGE

Dosage is typically 1.2% - 1.5% per weight of cement

PACKAGE: 1000 litres tank, 210 litres drum, 20 litres keg



SPECIAL ADMIXTURES

COSTARMIX 200CAST

High Early Age Strength, Low Viscosity High Performance water reducing Super Plasticizer for Precast Concrete Industry. ASTM C494, Type C & F



BENEFITS/APPLICATION

- High early age strength development to improve productivity, earlier transfer of pre-stress and negates the requirement for accelerating admixtures during cold weather.
- Water reductions of up to 45%, promote higher early age strength and superior ultimate strength.
- Ideal for producing Self Compacting Concrete (SCC), super workable flowing concrete and high workability concrete.

DOSAGE

Dosage is typically 0.5 - 1.5% per weight of cement

PACKAGE: 1000 litres tank, 210 litres drum, 20 litres keg

COSTARCEL 200

Chloride Free Accelerating admixture for reinforced concrete. ASTM C494, Type C & F



BENEFITS/APPLICATION

- Chloride free, safe in pre-stressed and reinforced concrete
- Allows continued placing of concrete at low temperatures.
- Reduces segregation and increases density and compressive strength

DOSAGE

Dosage is typically 0.6 - 1.5% per weight of cement

PACKAGE: 1000 litres tank, 210 litres drum, 25 litres keg

COSTARMIX 100

Complete high performance water reducing superplasticizer for concrete, mortar and Plaster. ASTM C494, Type A



BENEFITS/APPLICATION

- Reduced dimensions of long term shrinkage and creep. Also minimizes risk of segregation
- Improved workability and pumping properties
- Chloride-free and suitable for pre-stressing
- Increased compressive and flexural strength of the concrete.
- All concrete works where good workability and increased waterproofing proper pools, tunnels bridges etc.

DOSAGE

Dosage is typically 0.6% - 2% to per weight of cement

PACKAGE: 1000 litres tank, 210 litres drum, 20 litres keg

COSTARMIX CR

Non-Chloride Anti-Corrosion Admixture

BENEFITS/APPLICATION

- Can be used for concrete repair especially in areas requiring SCC repair compounds
- High Flow and Fluidity and controlled expansion
- It is use for concrete requiring fast stripping times



DOSAGE

Dosage is typically 1.2 - 1.5% per weight of cement

PACKAGE: 1000 litres tank, 210 litres drum, 25 litres keg



COSTARMIX AW

Ready to use Anti-wash liquid admixture

BENEFITS/APPLICATION

- Reduced moisture absorption and shrinkage
- Improved workability, finish, and appearance
- Improved strength

DOSAGE

2 liter per cubic yard

PACKAGE: 1000 litres tank, 20 litres , 5 litres keg



COSTARMIX C AIR

Liquid and Powder Air Entraining Admixture

BENEFITS/APPLICATION

- Chloride free, safe in pre-stressed and reinforced concrete
- Allows continued placing of concrete at low temperatures.
- Reduces segregation and increases density and compressive strength

DOSAGE

Dosage is typically 0.6 - 1.5% per weight of cement

PACKAGE: 1000 litres tank, 210 litres drum, 25 litres keg



COSTAR LIGHTCRETE

Admixture for Lightweight Concrete

BENEFITS/APPLICATION

- Stable air content also after placing of the concrete.
- Easily controlled addition of pre-foam to pre-batched mortar allows close control of finished density
- Costar Lightcrete is typically used for the production of foamed low density concretes which can be used for void filling for elimination of fire risk, trench filling for permanent, non-sink reinstatement or as a semi-structural support in cases such as embankments, bridge abutments, tunnels and arches.

DOSAGE

- Classified lightweight concrete: 0.4-0.8% (by weight of cement)
- Lightweight (pore) Concrete: 0.5-2.0 % (by weight of cement)

PACKAGE: 1000 litres tank, 210 litres drum , 25 litres keg



COSTAR BLOCK 10

Biodegradable admixture for masonry blocks

BENEFITS/APPLICATION

- Reduced moisture absorption and shrinkage
- Improved workability, finish, and appearance
- Improved strength

DOSAGE

0.8 - 1litres per 100kg of cementitious material

PACKAGE: 1000 litres tank, 210 litres drum, 25 litres keg



COSTAR BLOCK 20

Fast setting biodegradable admixture for masonry blocks

BENEFITS/APPLICATION

- Reduced moisture absorption and shrinkage
- Improved workability, finish and appearance
- Improved strength
- Increased production rate thereby saving cost.

DOSAGE

0.8 - 0.1litres per 100kg of cementitious material

PACKAGE: 1000 litres tank, 210 litres drum, 25 litres keg



COSTAR CONCRETE DISSOLVER

Concrete remover, cleaner and etching agent

BENEFITS/APPLICATION

- Rapid concrete etching action
- No corrosive action with glass, plastic and rubber
- For the removal of mortar and plaster runs, droppings and stains from brickwork and concrete surfaces
- Removal of rust and mill scale from steelwork

DOSAGE

Depends on site condition

PACKAGE: 1000 litres tank, 20 litres , 5 litres keg





WATERPROOFING ADMIXTURES

Waterproofing admixtures are specifically designed to become an integral part of the concrete for use in above and below the grade application to permanently waterproof your concrete.

GENERAL INTEGRAL WATERPROOFING

HYDROPRUF WP 100

A specially formulated water repellent powder admixture for waterproofing of concrete, plaster and screed.



BENEFITS/APPLICATION

- Unlike coatings, HYDROPRUF 100 when added to mortar or concrete during mixing becomes an integral part of the concrete and mortar. It reduces water permeability in the concrete, mortar and screed, thereby increasing building durability.
- It also helps to increase the compressive strength of concrete and protects reinforcement bars against ASR (Alkaline Silica Reaction) attack and corrosion.

DOSAGE

The recommended dosage for HYDROPRUF WP100 is 1 - 2% weight of cement.

PACKAGE: 20kg

STANDARD: European Standard BSEN934-2.

HYDROPRUF WP 300

Liquid anti-crack integral general waterproofing admixture which reduces the transmission of water through concrete, mortar and screed.



BENEFITS/APPLICATION

- Unlike coatings, HYDROPRUF 300 when added to mortar or concrete during mixing becomes an integral part of the concrete and mortar
- Reduces the permeability of the concrete, mortar and screed, thereby increasing building durability.
- It helps to increase the compressive strength of concrete
- Protects reinforcement bars against ASR attack and corrosion.

DOSAGE

The recommended dosage for HYDROPRUF WP300 is 250ml to 500ml for 50kg bag.

PACKAGE: 20Litres

STANDARD: European Standard BSEN3934-2.

HYDROPRUF WP 200

Liquid Integral water repellent general waterproofing admixture for concrete and mortar.



BENEFITS/APPLICATION

- It protects structure against water penetration and water damage for a long time.
- It Increases resistance to weathering, such as wetting and drying and freeze-thaw cycle.
- Reduces water absorption rate
- Protection against de-icing salts and efflorescence
- Increase resistance against steel corrosion

DOSAGE

The recommended dosage for Hydropruf WP200 is 0.8 – 1.5 percent of cement content.

PACKAGE: 20kg

STANDARD: European Standard BSEN934-2.

HYDROPRUF WP 400

Hydropruf WP 400 is an integral waterproofing admixture specially designed to improve the quality of concrete and mortar by waterproofing and reducing the water demand for required workability and minimizes segregation and bleeding.



BENEFITS/APPLICATION

- Improved workability
- Minimizes porosity
- Reduces the risk of segregation and bleeding drastically
- To increase the waterproofing properties of concrete and cement sand mortars for critical applications
- Suitable for waterproofing of roof slabs and screeds, basements, external plastering, bathroom floors, water tanks, sumps, drains etc.

DOSAGE

The minimum dosage is 125ml and the maximum is 200ml per 50kgs of cement.

PACKAGE: 5, 20 and 200 litres

STANDARD: European Standard BS8012:2009 Type B Construction





CRYSTALLINE WATERPROOFING

KRYSTAL 2000

A Hydrophilic crystalline admixture specially designed to permanently waterproof concrete. It is designed for use in above and below the grade applications.



BENEFITS/APPLICATION

- Protects the concrete against negative and positive water pressure.
- For waterproofing of recreational facilities such as aquatic centers, aquariums, zoos, water parks and marina.
- Below grade parking structures, basements, elevator pits and foundations of high-rise towers.

DOSAGE

Krystal 2000 is added at the rate of 1-2% by weight of Cement

PACKAGE: 20 Litres

STANDARD: European Standard BSEN934-2 Table 9

KRYSTAL 2600

Krystal 2600 is 4th generation hydrophilic and hydrophobic crystalline waterproofing admixture for designing a water tight concrete in both below and above the grade application. It ensures permanent impermeability of concrete and is used in place of surface applied waterproofing membranes for improved durability and longevity of concrete.

BENEFITS

- Reduces repair and maintenance costs
- Reduces permeability of the concrete.
- Helps to increase the compressive strength of concrete.
- Self-seals penetrating cracks up to 0.4mm and hairline cracks up to 0.5mm (0.02in.)
- Protects concrete against chemical attack and corrosion of reinforcing steel.
- Reduced concrete shrinkage and cracking.

AREA OF USE

Krystal 2600 can be applied to all concrete where water penetration should be permanently prevented such as: Foundations, Sewage treatment plants, Tunnels and subway systems, Underground structures, Dams, Swimming pools, Plastering of exterior walls, Bridge decks, columns beams, Roof and podium slabs and any other areas where high hydrostatic pressure is present.

DOSAGE: Krystal 2600 is added at the rate of 0.8 - 1% by weight of cement

PACKAGE: 20Kg

KRYSTAL 1500

Krystal 1500 reacts with the hydration products of cement to form crystals within the pores and capillaries of concrete structures, thereby effectively blocking the passage of water. It is specifically used for the treatment of concrete and concrete products to protect against water intrusion, leakage, cracking, chemical attack and corrosion of reinforcing steel.



BENEFITS/APPLICATION

- Crystalline action is reactivated by water providing dormant additional protection
- Improvement of the resistance to freeze/thaw
- Reduces repair and maintenance costs
- Reduces permeability of the concrete.
- Helps to increase the compressive strength of concrete.
- Protects concrete against chemical attack and corrosion of reinforcing steel.
- Krystal 1500 can be applied to all concrete where water
- penetration should be permanently prevented.
- It is specifically used for the treatment of concrete and concrete products to protect against water intrusion, leakage, cracking, chemical attack and corrosion of reinforcing steel.

DOSAGE: Krystal 1500 is added at the rate of 1.5% based on weight of cement

PACKAGE: 20 Kg





WATERPROOFING MEMBRANE

Costar Waterproofing Membrane Systems has been designed to solve all your concrete waterproofing needs producing 100% waterproofed concrete saving you millions in reduced labour and reduced maintenance cost and leaving you with concrete that lasts longer.

FLEXIBLE CEMENTITIOUS WATERPROOFING

COSTAR 1K

Costar 1K is a blend of Portland cement, well graded quartz sand and polymer enhanced chemical ingredients which when mixed with water, forms a waterproof coating for concrete surfaces. It can be used above or below the grade.



BENEFITS/APPLICATION

- Easy application
- Polymer modified
- Excellent resistance to strong hydrostatic pressure, both negative and positive sides
- Costar 1k can be applied on Concrete, brick and block foundations and retaining walls, wastewater tanks etc.
- It can also be used as a base coat for Costar 2k

CONSUMPTION

1.5kg/m² @ 1mm thickness

PACKAGE: 20Kg

COSTAR 2K FLEX

Two component waterproofing membrane with high-elastic properties suitable for both positive and negative side waterproofing of interior and exterior concrete.



BENEFITS/APPLICATION

- Allows the concrete to breathe
- Can be easily applied on horizontal and vertical surfaces with brush, roller, trowel or spraying machine
- Waterproofs, flexible and has high adhesion properties
- Is elastic, does not shrink or crack
- Non-poisonous, perfect for water tanks

CONSUMPTION

1.5 - 1.7kg/sqm at 1mm thickness.

PACKAGE: Part A: 20Kg, Part B: 5litres

COSTAR POLYCOAT 2K

Two component waterproofing membrane with tough-elastic properties suitable for both positive and negative side waterproofing of interior and exterior concrete and masonry surfaces



BENEFITS/APPLICATION

- Provides a tough, impermeable waterproof membrane
- Can be easily applied on horizontal and vertical surfaces with brush.
- Provides a seamless insulation layer
- Below sloping screed or waterproof plaster on: Roofs, terraces and balconies

COVERAGE

1.5 - 1.7kg /m² at 1mm thickness

PACKAGE: Part A: 20Kg, Part B: 5litres

COSTAR 2K

Two component waterproofing membrane with tough-elastic properties suitable for both positive and negative side waterproofing of interior and exterior concrete and masonry surfaces.



BENEFITS/APPLICATION

- Allows the concrete to breathe
- Can be easily applied on horizontal and vertical surfaces with brush, roller, trowel or spraying machine
- Waterproofs, flexible and has high adhesion properties
- Is elastic, does not shrink or crack
- Non-poisonous, perfect for water tanks

CONSUMPTION

1.5 - 1.7kg /m² at 1mm thickness

PACKAGE: Part A: 20Kg, Part B: 10litres

COSTAR 2B

Two component bitumen based elastic and quick dry membrane which adheres firmly to the applied surface and forms an elastic waterproof layer.



BENEFITS/APPLICATION

- Horizontal and Vertical Application
- Areas where higher resistant to water pressure is required.
- For wet areas such as bathroom, kitchen, balcony, toilets.
- Adheres perfectly to all kind of surfaces, even when the surface is moist.

COVERAGE

3 – 4 kg/m² is applied on each layer, in 1 mm thickness. It is recommended that at least 2 layers are applied (6 - 8kg/m²).

PACKAGE: Part A: 20Kg, Part B: 5Kg

KRYSTAL COAT

One-component crystalline waterproofing slurry that is specially designed to permanently waterproof both old and new concrete.

BENEFITS/APPLICATION

- Easy application, environmental friendly and cost effective.
- Can be applied to green concrete as soon as forms are stripped
- Resists strong hydrostatic pressure
- Suitable for all concrete applications for water impermeability
- Water tanks, wastewater tanks, water catchment basins, manholes, parking garages, tunnels, slurry walls.



MIXING

Add the 3 parts of Krystal Coat powder to 1 part of clean water

COVERAGE: 1 - 1.5kg / m²

PACKAGE: 20 Kg bag



ACRYLIC ELASTOMERIC MEMBRANE

COSTAR POLYCOAT

Acrylic Polymer for Cement Based Composite Waterproofing Membrane suitable for use below sloping screed



BENEFITS/APPLICATION

- Provides a tough, impermeable waterproof membrane. Can be easily applied on horizontal and vertical surfaces with brush.
- Provides a seamless insulation layer
- Below sloping screed or waterproof plaster on:
- Roofs, terraces and balconies

COVERAGE

Priming coat; 18-20m²/L, Topcoat; 5.5 – 6.0m²/L

PACKAGE: 10Litres

CONSEAL 100

Acrylic elastomeric and protective waterproof coating for sealing and waterproofing of roofs, walls and other wet areas.



BENEFITS/APPLICATION

- Sustainable roofing system that saves expensive removal and disposal cost.
- Ultraviolet and Infrared resistant for added durability.
- Resistant to acid rain and chemical pollutants.
- Won't spread flame over noncombustible surfaces.
- Recover and New Metal roof waterproofing
- Flat and low-pitched roof waterproofing, including BUR, concrete, EPDM, modified bitumen, PVC, and TPO

COVERAGE

0.64 litres /sqm to achieve a DFT of 400 microns (applied in minimum of two to three coats)

PACKAGE: 20 liters

POLYURETHANE MEMBRANES

CONSEAL 220

Con Seal 220 is a water based, polyurethane hybrid waterproofing membrane that cures to a permanently flexible seamless membrane with good adhesion to a wide range of substrates.



BENEFITS/APPLICATION

- Suitable for use on many porous substrates including fiber cement, concrete, render brickwork, render and plasterboard.
- It can be used to water/damp proof basements, kitchens, bathrooms, balconies and decks, shower recesses, repair and restoration of leaking roofs as well as a damp proof membrane in sandwich panel construction.
- Service year of 15 to 20 years.

COVERAGE

1.5 litres / m² to achieve a DFT of 1mm

PACKAGE: 20Kg

CONSEAL 250

Single Component Liquid Jointless Polyurethane Waterproofing System which resists UV rays and is capable of handling building movements. Con Seal 250 has a service life of 25 years. When used with Con Seal 270, can offer up to 35 years service life.



BENEFITS/APPLICATION

- Waterproofed surface provides excellent weather resistance and UV resistance
- Resistance to temperature variation
- Does not need the use of open flames (torch) during application.
- Waterproofing of concrete, tiles and metal surfaces such as roof, terraces and balconies, planter boxes, retaining walls etc. Service life of 25years.

COVERAGE: 1.4-2.5Kg/m² applied in two to three layers.

PACKAGE: 25kg bucket.

CONSEAL 270

Con Seal 270 is two components, solvent free, liquid applied Polyurethane based waterproofing coating which when mixed together, forms a high performance seamless elastomeric waterproofing.



BENEFITS/APPLICATION

- Waterproofed surface provides excellent weather resistance and UV resistance
- Resistance to temperature variation
- Does not need the use of open flames (torch) during application.
- Waterproofing of green roofs, flowerbeds, planter boxes, kitchen, auxiliary rooms etc.

PACKAGE: Component A; 17Kg, Component B; 3Kg

LIQUID BITUMEN MEMBRANE

CONSEAL 300

Pure Bitumen Emulsion Waterproofing Membrane, with excellent elastic property used for long-lasting waterproofing.



BENEFITS/APPLICATION

- Waterproofing of Foundations
- Waterproofing of Retaining Walls
- Under-tile Waterproofing in Bathrooms, Terraces, Roofs
- Provides excellent crack-bridging properties.
- Provides excellent thermal resistance, it never turns soft.

COVERAGE

Con Seal 300 is applied at the rate of 1.3 - 1.7kg/m².

PACKAGE: 20kg





BITUMINOUS MEMBRANE SYSTEMS

COSTAR PRO SHIELD 100 (APP MEMBRANE)

Bituminous waterproofing membrane for roof and retaining walls. It is heat applied.



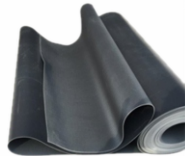
BENEFITS/APPLICATION

- Costar Pro Shield 100 can accommodate structural movements and resistant to water borne chemicals.
- It is used as waterproofing membrane on roofs, patios, terraces, slabs, bridges, basements, retaining walls etc.
- 4mm thickness

PACKAGE: 1m width x 10m length per roll

COSTAR PRO SHIELD 50 (SBS MEMBRANE)

Self-adhesive cold applied polymer modified bituminous waterproofing sheet membrane, laminated onto a tough HDPE film on one side and a silicone release film on the other.



BENEFITS/APPLICATION

- Costar Pro Shield 50 is cold applied, self-adhesive and easy to apply.
- It is used as waterproofing or damp proofing membrane intended for concrete protection. It is also used for horizontal and vertical application for tanking below ground structures, subways and retaining walls.

PACKAGE:
1m width x 10m length per roll

COSTAR PRO SHIELD HDPE

Costar Pro Shield (HDPE) Membrane comprises of a specially designed thick HDPE film, pressure sensitive adhesive and weather resistant protective coating. The Costar HDPE membrane bonds with green concrete cast on the membrane, forming a Highly effective sealing that prevent the lateral movement and penetration of water into the structure. Reinforcement can be directly laid on top of the Costar HDPE membrane.



BENEFITS/APPLICATION

- Forms a unique continuous adhesive bond to concrete poured against it -prevent water migration and make it unaffected by any substrate settlement beneath the slabs.
- Provides a barrier to water, moisture and gas-physically isolates the structure from the surrounding ground.
- It's applied before reinforcement is installed.
- Easy roll/kick out installation- reduces installation time and cost.

PACKAGE: Roll size of 15/20 m length x 2.4 – 2.5 Meter Width





FLOORING SYSTEMS

Costar Building Product System offers variety of flooring options to fit the necessities of private, industrial and commercial projects.

EPOXY FLOORING

COSTAFLO 600 SL

Three-component, solvent free epoxy resin based selfleveling floor topping with high mechanical strength developed for use on metal and concrete surfaces.

BENEFITS/APPLICATION

- Self-Leveling
- Ensures a hard and durable surface
- Seals surface preventing water, fuel and oil permeability
- Does not contain pigments
- Ensures safe use in places with poor ventilation
- Seamless dust free and easy to clean surface
- Excellent surface hardness, mechanical and resistance
- COSTAFLO 600 SL is used to provide a heavy duty leveled surface for storage and assembly halls, maintenance workshops, garages, loading ramps, factories etc.

COVERAGE

Mix the entire content of each container together and stir thoroughly slowly

PACKAGE

5.4kg+ 3.94kg+ 14kg= 23.3kg



COSTAFLO 600 EMS

Three component non shrink epoxy resin-based mortar screed for industrial flooring applications. It is designed for application or thickness ranging from 5-10mm and above.

BENEFITS/APPLICATION

- Impressive mechanical resistance with high compressive and flexural strength
- Durable and easy to maintain
- Excellent general chemical resistance against solutions of acids, alkali, salts, oil, fuels and solvents.
- Costarflo 600EMS is used for industrial flooring where high mechanical or chemical resistance, ease of cleaning and hygiene are required.

CONSUMPTION

2kg/m² per 1mm thickness.

PACKAGE

23.5kg pack (containing base hardener and filler)



COSTAFLO 700

COSTAFLO 700 is two components, solvent free epoxy top coat. It has a great appearance, dust, corrosion resistance and easy to clean.

BENEFITS/APPLICATION

- Long-work time, easy placement.
- Anti-scratch topcoat
- Dynamic load stability.
- High strength.
- Can be mixed at a wide range of consistencies.
- Great resistance to chemicals, acids and solvents.
- Used for floors in mechanical and chemical industries (pharmaceutical, automotive workshops, warehouse etc.) and where dust free atmosphere is required.
- Floors where heavy forklift traffic is encountered.

COVERAGE

Mix the two components with mechanical stirrer for about 3-5 minutes to ensure homogenous mixing.

PACKAGE: 18kg + 6Kg



COSTAFLO 500

COSTAFLO 500 is two-component solvent free epoxy primer with high mechanical strength developed for use on metal and concrete surfaces.

Costaflo 500 comes in two component - A: 11.25litres & B: 3.75litres

POLYUREA FLOORING

CONFLOOR 5200

Confloor 5200 is a very fast curing, two component, aromatic, flexible, pure polyurea system coating derived from a reaction of an isocyanate pre-polymer and an amine terminated resin blend.

This product is especially applied to surfaces to build up antistatic coatings to avoid risks of ignition due to electrostatic charge. It can be applied to areas where flammable liquids of danger classes are stored. For protecting and coating purposes, this product can be applied on materials like concrete, metal, wood, ceramic and PU Foam.

Consumption: 1- 1.2kg/ m2 per 1mm thickness

PACKAGE: Component A: 200Kg, Component B: 225Kg



UCRETE FLOORING

COSTARCRETE 5300

Costarcrete 5300 is three component, self-leveling, VOC compliant urethane, non-slip flooring system applied as a wet slurry mortar that is spread and then allowed to level to provide a smooth flooring surface. It is resistant to extreme hot and cold changes in temperature and does not support bacterial growth. It is suitable for flooring in breweries and wineries, pharmaceutical Plants, commercial Kitchens and Restaurants, processing Areas and loading bays etc.

It can be applied at 3.5mm thickness.

PACKAGE: Component A: 220Kg, Component B: 225Kg, Component C: 225Kg





MONOLITHIC POWDER FLOOR HARDENERS

COSTAR TOP 100

Costar Top 100 is a non metallic dry shake floor hardener applied to freshly poured concrete to improve abrasion and wear resistance and impermeability of the concrete surface.



BENEFITS/APPLICATION

- Provides a hardwearing abrasion resistant surface
- Significantly increases the life of concrete over that of untreated concrete
- Forms monolithic bond with base concrete
- Water, oil and other contaminants resistant.
- High impact resistance and dust proofs.
- It is typically applied as a dry shake over freshly placed concrete in industrial, commercial, loading bays, Factories, Warehouse, Car Park, Trucking Lanes, Workshops etc.

COVERAGE

Costar Top 100 is applied at the rate of 3-5 kg/m².

PACKAGE: 20Kg

COSTAR TOP 200

A hard wearing, factory blended ready to use cementitious system with a blend of 100 % pure emery -tuff and special dry shake fillers that hardens freshly poured concrete.



BENEFITS/APPLICATION

- They are ideally suited for all industrial areas subject to very heavy traffic.
- Provides a hardwearing abrasion resistant surface
- Significantly increases the life of concrete over that of untreated concrete
- Resist penetration by oil, grease and other contaminants
- It is typically applied as a dry shake over freshly placed concrete in industrial, commercial, loading bays, Factories, Warehouse, Car Park, Trucking Lanes, and Workshops

COVERAGE

Costar Top 200 is applied at the rate of 3-5 kg/m².

PACKAGE: 20Kg

LIQUID HARDENERS & DUST PROOFERS

COSTAR TOP 10

Clear Sodium Silicate based Densifier and Concrete Hardener



BENEFITS/APPLICATION

- Easy to use and fast drying
- A low cost treatment for exposed concrete surfaces
- Residue-free surface allows bond of various paints, adhesives or toppings
- Improved abrasion and chemical resistance

COVERAGE

Approximate coverage is about 7m² per liter

PACKAGE: 20Litres

COSTAR TOP 20

- Low VOC Lithium Silicate based Densifier and Concrete Hardener



BENEFITS/APPLICATION

- A low cost treatment for exposed concrete surfaces
- Residue-free surface allows bond of various paints, adhesives or toppings
- Low odor and non-yellowing
- Improves cleanability
- It is applied on old and new concrete surfaces such as factories, texture mills and warehouses.

COVERAGE

Approximate coverage is about 7m² per liter

PACKAGE: 20Litres



CONCRETE SEALERS

CONCRETE SEALER 10

A water based V.O.C. compliant concrete sealer that provides maximum adhesion and protection on concrete surfaces, giving the treated surface a fresh look.



BENEFITS/APPLICATION

- UV resistant
- Weather resistant
- Does not yellow
- Maximum adhesion and protection on concrete surfaces, giving the treated surface a fresh look.

COVERAGE

Exact coverage depends on the surface structure, porosity and absorption of the concrete.

PACKAGE: 20Litres

COSTAR PAVER SEALER

Costar Paver Sealer is one component sealer and joint sand stabilizer specially formulated to enhance the natural beauty of the stone, brick or concrete surface.



BENEFITS/APPLICATION

- Easy application and fast drying
- UV resistant
- Repels oil, grease and radiator rust stains and locks down joint sand
- Inhibits weeds and grass between pavers
- Enhances color without darkening
- It's area of application includes; Interlocking concrete pavers, Paving and natural stones, masonry bricks etc.

COVERAGE

Exact coverage depends on the surface structure, porosity and absorption of the concrete.

PACKAGE: 5litres and 20 litres

CONCRETE SEALER 20

Resin Based Concrete Sealer that provides maximum adhesion and protection on concrete surfaces, giving the treated surface a fresh look.



BENEFITS/APPLICATION

- UV resistant
- Weather resistant
- Does not yellow
- Maximum adhesion and protection on concrete surfaces, giving the treated surface a fresh look.
- It is applied on Brick & block, new and cured concrete, colored concrete etc.

COVERAGE

Exact coverage depends on the surface structure, porosity and absorption of the concrete.

PACKAGE: 20Litres





SELF LEVELING

COSTARFLO 100

Cementitious self-leveling single component underlayment, suitable for use in light to Medium-duty internal applications on new or existing substrates in order to receive all kinds of flooring covering.



BENEFITS/APPLICATION

- Excellent self-leveling properties
- Low VOC
- Smooth surface profile
- Excellent bonding properties
- High Strength and reduced Shrinkage
- Excellent flexural and tensile strength
- Used in areas such as hotels, theaters, hospitals, schools Industries, etc.
- For levelling existing concrete pavements, terrazzo, ceramic, or natural stone after a good surface preparation and priming.

COVERAGE: 1.7 kg/m²/mm thickness

MIXING: 20 Kg bag of Costarflo 100 is to be mixed with 5 liters of clean water

PACKAGE: 20Kg

COSTARFLO 300

Costarflo 300 is heavy duty cementitious self-leveling overlayment for concrete floors.



BENEFITS/APPLICATION

- High Strength
- Smooth surface profile
- Ensures safe use in places with poor ventilation
- Excellent flow with long slump life
- Excellent flexural and tensile strength
- Dense corrosion resistance surface
- Great resistance to chemicals, acid and solvents
- Great anti-static properties
- COSTARFLO 300 is used to provide a heavy duty leveled surface for storage and assembly halls, maintenance workshops, garages, loading ramps, factories, warehouses, shopping centers, laboratories etc

MIXING

Add Costarflo 300 into 4.4 liters of water and mix with a slow speed drill (300-600 rpm) until a lump-free mix is achieved.

PACKAGE: 20Kg



COSTARFLO 200

COSTARFLO 200 is a cementitious self-leveling single component underlayment, suitable for use in light to Medium-duty internal applications on new or existing substrates in order to receive all kinds of floor covering.



BENEFITS/APPLICATION

- Excellent self-leveling properties
- Low VOC
- Fast Setting
- Good bonding properties
- Reduced Shrinkage
- Used in areas such as hotels, theaters, hospitals, schools, Industries, airports halls.
- For leveling existing concrete pavements, terrazzo, ceramic, or natural stone after a good surface preparation.

COVERAGE: 1.7 kg/m²/mm thickness

MIXING: 20 Kg bag of Costarflo 200 is to be mixed with 5 liters of clean water

PACKAGE: 20Kg

COSTARFLO 400

Costarflo 400 is fast setting heavy duty cementitious self-leveling overlayment for concrete floors. It creates an abrasion resistant smooth surface. It can be used as a high strength underlayment for coatings and floor coverings.



BENEFITS/APPLICATION

- Fast setting and heavy duty overlayment
- Smooth surface profile
- Ensures safe use in places with poor ventilation
- Excellent flow
- Excellent flexural and tensile strength
- Dense corrosion resistance surface
- Great resistance to chemicals, acid and solvents
- COSTARFLO 400 is used to provide a heavy duty leveled surface for storage and assembly halls, maintenance workshops, garages, loading ramps, factories, warehouses, shopping centres etc

MIXING

Add Costarflo 400 into 4.4 liters of water and mix with a slow speed drill (300-600 rpm) until a lump-free mix is achieved.

PACKAGE: 20Kg

COSTAR PRIMER 10

Costar Primer 10 is low-VOC, water-based solution used to prime surfaces prior to the application of self-leveling underlayment.



BENEFITS/APPLICATION

- Single-coat application for faster turn around and lower installation costs
- Easy handling and application
- Enhances the performance and adhesion of underlayment on both porous and non-porous substrates. Interior residential (apartments, condominiums and homes)
- Interior commercial (office buildings, hotel rooms etc.)
- Interior heavy commercial (hotel lobbies, convention centers, airports, shopping malls and grocery stores)

COVERAGE

Approximately 2-3m² per liter

PACKAGE: 20Litres



TILING SOLUTION

There are various ranges of Costar Tiling Solutions, each of which have been created with a specific application in mind. They all contain different quantities of certain ingredients, additives, and polymers, depending on the required situation. This means there is really no limit to the range of surfaces which can be tiled over.

TILE ADHESIVES

COSTAR TILE FIX 5

Ready to use cementitious tile adhesive for setting indoor and outdoor ceramic flooring and indoor walls of small to medium sized tiles.



BENEFITS/APPLICATION

- Good workability and high bond strength
- Ideal for conventional cement-based substrates
- To be applied on interior walls and floors of residential buildings, bathrooms, kitchens etc.
- Suitable for medium sized ceramic tiles with a medium-high absorption rate.

COVERAGE: 3m² - 4m²/ 20kg bag

MIXING: 20Kg of Costar Tile Fix 5 to 4 liters of water

PACKAGE: 20KG

STANDARD: EN 12004. Class; C1

COSTAR TILE FIX 10 FLEX

Ready to use waterproofed Tile Adhesive Suitable for Internal and External Uses



BENEFITS/APPLICATION

- Dual purpose-Walls and floors
- Water repellent properties
- Excellent initial adhesion and easy to apply
- Waterproofing properties
- To be applied indoor and outdoor on floors, walls and baseboards of residential buildings.

COVERAGE: 3m² - 4m²/ 20kg bag

MIXING: 20Kg of Costar Tile Fix 10 Flex to 4 liters of water

PACKAGE: 20KG

STANDARD: EN 12004. Class; C1T

COSTAR TILE FIX 20 FLEX

High performance standard grade cementitious tile adhesive made of mixed binders, non slip and extended open time.



BENEFITS/APPLICATION

- Water repellent properties
- Suitable for the placing for all kind of ceramic pieces, porcelain clay, natural stone, granite and marble.
- High grip strength, good workability and aging resistance.
- Suitable for tiling of intense traffic areas.
- Suitable for tiles overlaying.
- Swimming pool tiling.
- Suitable for interior and exterior pavement, interior claddings and baseboards.
- Suitable for large sized tiles and marbles

COVERAGE: 3m² - 4m²/ 20kg bag

MIXING: 20Kg of Costar Tile Fix 20 Flex to 4 liters of water

PACKAGE: 20KG

STANDARD: EN 12004. Class; C2TE

COSTAR TILE FIX 10

Ready to use cementitious tile adhesive special for its thixotropy and creamy texture.



BENEFITS/APPLICATION

- Dual purpose-Walls and floors
- Excellent initial adhesion and easy to apply
- Non slip
- Suitable for medium sized ceramic tiles with a medium-high absorption rate.
- Waterproofing properties
- To be applied indoor and outdoor on floors, walls and baseboards of residential buildings.

COVERAGE: 3m² - 4m²/ 20kg bag

MIXING: 20Kg of Costar Tile Fix 10 to 4 liters of water

PACKAGE: 20KG

STANDARD: EN 12004. Class; C1T

COSTAR TILE FIX 20

High performance standard grade cementitious tile adhesive made of mixed binders, non slip and extended open time.



BENEFITS/APPLICATION

- Suitable for the placing for all kind of ceramic pieces, porcelain clay, natural stone, granite and marble.
- High grip strength, good workability and aging resistance.
- Suitable for tiling of intense traffic areas.
- Suitable for tiles overlaying.
- Swimming pool tiling.
- Suitable for interior and exterior pavement, interior claddings and baseboards.
- Suitable for large sized tiles and marbles

COVERAGE: 3m² - 4m²/ 20kg bag

MIXING: 20Kg of Costar Tile Fix 20 to 4 liters of water

PACKAGE: 20KG

STANDARD: EN 12004. Class; C2TE





COSTAR TILE FIX 30

High performance waterproofed tile adhesive made of mixed bonding agent providing high flexibility and adherence, non slip, extended open time and deformable properties.



BENEFITS/APPLICATION

- Non slip, excellent initial adherence. Long open time; allow rectification.
 - Highly recommended for large format types. Deformable; Type S1 according to UNE - EN 12004
 - Suitable for all types of ceramic tiles, marbles, granite and natural stone.
 - Laying tiles over cementitious waterproofing.
 - Swimming pool tiling.
 - To be applied indoors and outdoors; facades.
 - Suitable for tile on tile application
- Excellent waterproofing properties.

MIXING

20Kg of Costar Tile Fix 30 Flex to 5 liters of water

PACKAGE: 20Kg

STANDARD: EN 12004, Class; C2TES1

COSTAR TILE FIX 30 FLEX

High performance water repellent tile adhesive made of mixed bonding agent providing high flexibility and adherence, non slip, extended open time and deformable properties.



BENEFITS/APPLICATION

- Water repellent properties
- Non slip, excellent initial adherence. Long open time; allow rectification.
- Highly recommended for large format types. Deformable; Type S1 according to UNE - EN 12004
- Suitable for all types of ceramic tiles, marbles, granite and natural stone.
- Laying tiles over cementitious waterproofing.
- Swimming pool tiling.
- To be applied indoors and outdoors; facades.
- Suitable for tile on tile application
- Excellent waterproofing properties

MIXING

20Kg of Costar Tile Fix 30 Flex to 6 liters of Liquid component

PACKAGE: 20Kg, 6 Litres

STANDARD: EN 12004, Class; C2TES2

TILE GROUTS

COSTAR PRO JOINT FILLER 10

Waterproofed Cementitious Tile Joint Filler

BENEFITS/APPLICATION

- Suitable for areas that will be dry or intermittently wet
- Exceptional and consistent quality
- Suitable for joint widths up to 10mm
- Can be used in conjunction with under-tile heating
- For grouting joints between tiles
- Suitable for walls and floors
- Suitable for interior and exterior use
- Used in kitchens, Swimming pools, bathrooms and shower stalls.
- Set time: 24hours

MIXING

Mix 20Kg Powder with 4 liters of water

PACKAGE: 5kg & 10Kg



COSTAR PRO JOINT FILLER 20

Costar Pro Joint Filler 20 is polymer-modified, fast setting waterproof tile grout for grouting between ceramic tiles after the adhesive has set.

BENEFITS/APPLICATION

- Suitable for areas that will be dry or wet
- Exceptional and consistent quality
- Suitable for joint widths up to 20mm
- Can be used in conjunction with under-tile heating
- For grouting joints between tiles:
- Suitable for walls and floors
- Suitable for interior and exterior use
- Suitable for intermittently wet and dry conditions
- Used in kitchens, Swimming pools, bathrooms and shower stalls
- Set Time: 8-10hours

MIXING

Mix 20Kg Powder with 4 litres of water component

PACKAGE: 5kg & 10Kg



COSTARPOXY SP-100

Epoxy Tile Adhesive and Tile Grout

BENEFITS/APPLICATION

- Polymer/resin modified
- Extra added flexibility
- Strong adherence
- It is used for fixing tiles and grouting joints between tiles
- Suitable for walls and floors
- Suitable for interior and exterior use
- Used in kitchens, Swimming pools, bathrooms and shower stalls

MIXING

Mix all three components together

PACKAGE

Component A: 2.42Kg, Component B: 0.26Kg





COSTAR TILE CLEANER

COSTAR PREMIUM SEALER

Costar Premium Sealer is water-repellent fortified with new, heavy-duty resin technology to provide maximum protection on all types of natural and artificial stones, granites, porcelain ceramic tiles, concrete surfaces etc.



BENEFITS/APPLICATION

- Permanent protection against atmospheric agents.
- Water- Repellent.
- Excellent stain repelling properties thereby making the surface easier to clean.

Water absorption reduction.

COVERAGE

- Cementitious surfaces;
Approximately 0.1-0.2litre/m², depending on the absorption capacity of the surface
- Natural Stone;
Approximately 0.05 to1 litres/m²

PACKAGE

5 Liters , 20 Litres

COSTAR SUPERCLEAN

Fast acting general purpose cleaner specially designed for regular cleaning of dirt and stains



BENEFITS/APPLICATION

- Great for ceramic and porcelain tile as well as natural stone surfaces
- Ideal for Interior & Exterior
- Countertops, Backsplashes, Floors, Walls
- For interior & exterior applications of Tile surfaces

COVERAGE

Coverage depends on the intensity of stain and the porosity of the surface

PACKAGE

5 Liters , 20 Litres





REPAIR AND BONDING AGENT

Costar series of repair and bonding agents are specially formulated for repair/re-profiling of concrete, featuring good adhesion to substrates, rapid setting, and excellent standard finish.



REPAIR MORTARS

COSTAR RM 10

High Quality Patch Repair Mortar. The high-strength patching material is suitable for both interior and exterior concrete surfaces, and for general repair of cracks.



BENEFIT/APPLICATION

- Patching and concrete repair of masonry blocks, curbs, steps, sidewalks, and more, both for external and internal purposes.
- Improves impermeability and chemical resistance.
- No pollution to environment.
- Tenacious adhesiveness and low shrinkage.
- Used as plaster on walls and panel system.
- For repair and bonding of concrete

Application Thickness: 5-50mm

MIXING: 20Kg of Costar Repair Mortar 10 to 4.6 liters of water

PACKAGE: 20Kg

STANDARD: BSEN 1504

COSTAR RM 20F

High Quality Fast Setting repair mortar ideal for the repair or re-profiling of concrete.



BENEFIT/APPLICATION

- Easy to prepare and quick to apply
- Improves impermeability and chemical resistance
- Rapid setting; receives primers, levelers, adhesives and coverings without delay
- Improves compressive strength and durability
- Excellent high build properties
- Patching and repair of masonry blocks, curbs, steps, sidewalks, and more, both for external and internal purposes
- Used as plaster on walls and panel system.

Application Thickness: 10-100mm

MIXING: 20Kg of Costar RM 20F to 4.6 liters of water

PACKAGE: 20Kg

STANDARD: BSEN 1504

COSTAR RM 40

Polymer modified structural patching concrete with high ultimate compressive strength and abrasion resistance.



BENEFIT/APPLICATION

- Easy to prepare and quick to apply
- Improves impermeability and chemical resistance
- Rapid setting; receives primers, levelers, adhesives and coverings without delay
- Improves compressive strength and durability
- Excellent high build properties
- Patching and repair of curbs, steps, sidewalks, and more, both for external and internal purposes.

Application Thickness unfilled: 10-100mm

MIXING: 20Kg of Costar RM 40 to 6 liters of water

PACKAGE: 20Kg

STANDARD: BSEN 1504

COSTAR RM 20

One component cementitious high quality concrete repair & patching Mortar ideal for the repair or re-profiling of concrete.



BENEFIT/APPLICATION

- Patching and repair of masonry block, curbs, steps, sidewalks and more, both externally and internally.
- Easy to prepare and quick to apply.
- It may be used for flatwork, in-situ or precast beams
- Improves impermeability and chemical resistance

Application Thickness: 10-100mm

MIXING: 20Kg of Costar Repair Mortar 20 to 4.6 liters of water

PACKAGE: 20Kg

STANDARD: BSEN 1504

COSTAR RM 30

High Quality Smooth Finish patch repair mortar ideal for the repair or re-profiling of concrete.



BENEFIT/APPLICATION

- Easy to prepare and quick to apply.
- Improves impermeability and chemical resistance
- Good adhesion to substrates, subfloors and stable adhesive residue.
- It may be used for flatwork, in-situ or precast beams, columns and walls.
- It's used as plaster on new type walling and panel system.
- It's widely used re-profiling and repairs on highway, fly-overs, car parks, concrete constructions on the sea

Application Thickness: 3-20mm

MIXING: 20Kg of Costar RM 30 to 6 liters of water

PACKAGE: 20Kg

STANDARD: BSEN 1504

COSTAR RM 50

polymer modified fast setting structural patching concrete with high ultimate compressive strength and abrasion resistance.



BENEFIT/APPLICATION

- Improves impermeability and chemical resistance
- Good adhesion to substrates, subfloors and stable adhesive residue.
- It may be used for flatwork, precast beams, and columns
- It's widely used re-profiling and repairs on highway, fly-overs, car parks, concrete constructions on the sea.

Application Thickness unfilled: 10-100mm

MIXING: 20Kg of Costar RM 50 to 6 liters of water

PACKAGE: 20Kg

STANDARD: BSEN 1504



COSTAR EPOXY CONCRETE REPAIR MORTAR

Epoxy Concrete Repair Mortar is a two components shrink-free epoxy concrete repair mortar with low viscosity.



BENEFIT/APPLICATION

- Stands up to heavy traffic and many chemicals
- Does not shrink or crack
- High tensile strength
- For repairing eroded or damaged concrete, bay edges and broken steps
- Easy all-in-1 packaging
- It's non-sag property makes it suitable for vertical repairs
- Suitable for the repair and filling of cracks up to 6mm wide in a construction works, varying from concrete, bricks, stucco, stone, concrete blocks, tile and other substrates

MIXING

Mix the granular resinous material with the curing agent on a board

PACKAGE: 20kg

STANDARD: European Standard EN 1504

COSTAR UW MORTAR

Quick Strength Cementitious Underwater Mortar. The powder, when mixed with water, produces a mortar which is wash-out resistant and waterproof. It was explicitly designed for underwater repair works.



BENEFIT/APPLICATION

- Easy to use Rapid setting
- Safe to use, non-toxic, and non-hazardous in underwater environments.
- High resistance to wave action during placing
- Excellent bond strength to clean concrete, brick, masonry, steel and concrete
- Repairing eroded concrete or timber piles, sea walls, wharves
- Repairing leaks or joints in marine structures, concrete reservoirs, swimming pools, pipelines, well etc.

MIXING

3 Volumes of Costar UW Mortar to 1 volume of fresh water only

PACKAGE: 20Kg

STANDARD: BSEN 1504

HYDRAULIC PLUGS

COSTAR SUPER PLUG

Costar Super Plug is a single component, cementitious non-shrink, hydraulic cement, specifically designed to withstand strong hydrostatic pressure. It is breathable, it has no odor, no fumes & is non-flammable.



BENEFIT/APPLICATION

- Stops water leaks in one to three minutes at 20°C
- Water stopper and structural repair mortar
- Certified for use in contact with potable water
- Applied against the water pressure to substrates such as concrete and masonry, interior, exterior, below and above grade, vertical or horizontal.
- Used for Plugging and repair of water leakages
- Drying of wet areas, sealing leaky joints, cracks or form tie holes

MIXING

5 liters of water to 20kg powder
One part of water to 4 part powder.

PACKAGE: 20Kg

KRYSTAL PLUG

Cementitious, Non-shrink One-component Hydraulic Crystalline Plug Cement based on crystalline waterproofing technology.



BENEFITS/APPLICATION

- Excellent bond to concrete and masonry
- Stops water leaks in one to three minutes at 20°C
- Water stopper and structural repair mortar
- Certified for use in contact with potable water
- Used for Plugging and repair of water leakages
- Drying of wet areas, sealing leaky joints, cracks or form tie holes
- Applied against the water pressure to substrates such as concrete and masonry, interior, exterior, below and above grade, vertical or horizontal.

MIXING: Approximate mixing ratio by volume: 1 part water to 4 parts powder (1:4)

PACKAGE: 20Kg

STANDARD: BS8102:2009



BONDING AGENTS

AQUALATEX C10

High quality viscous acrylic emulsion bonding agent used for concrete repairs, especially areas where good adhesion are required

BENEFIT/APPLICATION

- Can be used with virtually all types of cement.
- Suitable for interior and exterior applications.
- It is suitable for use as a bonding agent for bonding new concrete to old concrete and masonry surfaces.
- It is suitable for use in cement based coatings, toppings, patches, leveling compound, stucco, terrazzo and mortar.

COVERAGE

As Bonding Agent:

- 0.5 Part Cement: 1 Part Aqualatex C10 by Weight

As Cement Modifier:

- 1 liter of Aqualatex C10: 5Kg cement: 15Kg graded quartz sand

As Waterproofing Agent:

- 2-5% of Aqualatex to be mixed with concrete by weight of cement

PACKAGE: 20 litres bucket and 200 litres drum



COSTAR SUPERBOND 5

Costar Superbond 5 is polyvinyl alcohol stabilized, externally plasticized, vinyl acetate homopolymer. It contains no harmful phthalates. It is suitable for use as general-purpose economic adhesive, sealer and mortar improver.

BENEFITS

- General purpose bonding agent and admixture for concrete and plasters
- Cement render improver
- Reduces surface dusting

APPLICATION

- As a highly effective and easy to use building adhesive
- As a primer, admixture, bonding agent, sealer and dust-proofer.
- For use on a wide range of building jobs.
- As general purpose adhesive for wood, cork, paper, tex
- As an internal filler when mixed with shavings/plaster.

PACKAGE: 5 Litres



COSTAR SUPERBOND 10

A waterproofer and bonding additive for tiling.

BENEFITS/APPLICATION

- Polymer improver for cement and tiling
- Bonding additive for tiling
- Waterproofing and tanking
- Concrete repair
- Floor screed and topping

PACKAGE: 5Liters



COSTAR SUPERBOND 20

Costar Superbond 20 is a two-component epoxy bonding material ready for on-site mixing and use. It is suited to internal and external applications.

Costar Superbond 20 conforms to ASTM C881: Type II, grade 2, class C.

BENEFITS/APPLICATION

- Easy-to-use for bonding/grouting applications
- Can be applied on to dry or damp substrates
- For bonding of fresh, plastic concrete to existing cementitious surfaces
- Ideal for roads, bridges, pavements, loading bays etc.

PACKAGE: A & B = 5kg





STRUCTURAL GROUT/ GROUTS AND ANCHORS

Structural grouts with excellent high early and ultimate strengths and durability

COSTARGROUT C10

Costargrout C10 is a non-shrink structural grout specially designed to produce high early and high ultimate strength in anchoring and grouting of anchor bolts, retrofitted reinforcing steel, steel column bases and other installations.



BENEFIT/APPLICATION

- Chloride Free
- It is easy to mix and apply
- Non-bleeding /non-segregating
- Costargrout C10 may be used in many grouting applications that require transfer of static load such as;
- Grouting under baseplates, columns and equipment not subjected to heavy impact or vibratory loads.
- Columns in precast contractions,
- Crane and transporter rails
- Concrete anchors
- Diesel generator sets.

Coverage: 115 bags of 20kg / (m³)
MIXING: Flowable 3.6 litres to 20Kg
PACKAGE: 20Kg

COSTARGROUT C20

COSTARGROUT C20 is high strength, non-shrink, and Portland cement based precision grout with excellent high early and ultimate strengths. The precision grout product includes expansive additives, requiring only the addition of water to obtain flow-able properties and high strengths.



BENEFIT/APPLICATION

- Chloride Free
- It is easy to mix and apply
- Non-bleeding /non-segregating
- Impact or vibratory loads.
- Columns in precast contractions
- Crane and transporter rails
- Concrete anchors
- Diesel generator sets.

Coverage: 115 bags of 20kg / (m³)
MIXING: Flowable 3.6 litres to 20Kg
PACKAGE: 20Kg

COSTARGROUT C30

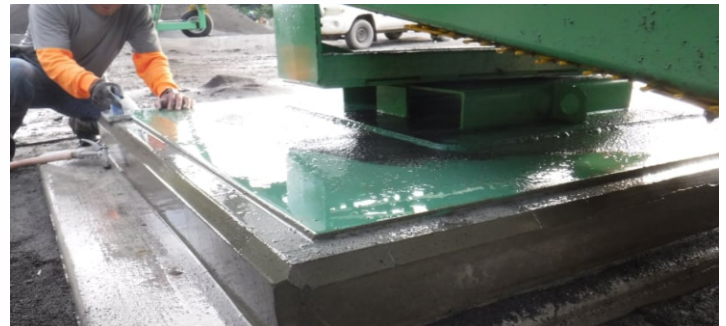
COSTARGROUT C30 is high strength, non-shrink, and fast setting Portland cement based precision grout with excellent high early and ultimate strengths. The precision grout product includes expansive additives, requiring only the addition of water to obtain flow-able properties and high strengths.



BENEFIT/APPLICATION

- Chloride Free
- Fast setting (6-8 hours)
- It is easy to mix and apply
- Non-bleeding /non-segregating
- Impact or vibratory loads.
- Columns in precast contractions,
- Crane and transporter rails,
- Diesel generator sets,
- Steel rolling mill beds, Cement, textile and paper mill machinery etc.

Coverage: 115 bags of 20kg / (m³)
PACKAGE: 20Kg



Compressive Strength N/mm²
Flowable W/P=0.18

Age (Days)	DAY 1	DAY 3	DAY 7	DAY 28
Costargrout C10	10	26	32	46
Costargrout C20	24	41.5	55	65
Costargrout C30	44	60	76	91.6
Costargrout C40	45.3	65.5	85.7	108.2

Consult datasheet for more information

COSTARGROUT C40

Costar Epoxy Baseplate Grouting System

- Costargrout - C40 is a 3-component, 100% solids, moisture-tolerant, epoxy baseplate grouting system produced from carefully selected raw materials for consistency of product, hardens in 24 hours.
- It is suitable for areas that require the transfer of dynamic load.
- It is suitable for precision grouting of wind turbine tower bases requiring rapid strength gain.
- Grouting for "pour-back" anchorage on post tensioning projects (e.g. segmental bridge).
- Grouting under equipment, including heavy impact and vibratory machinery, reciprocating engines compressors, pumps, press, etc;

Coverage: 154 bags of 15kg / (m³)
PACKAGE: 3-component (A----4.71kg B----1.59kg C----- 8.7kg)





SURFACE TREATMENT

Costar Building Products manufacture supporting products for curing of concrete and releasing of form works specifically designed to ensure smooth finish.



RELEASE AGENT

COSTAR FORM 100

COSTARFORM 100 is an organic emulsion based product, which provides quick easy and clean release of concrete forms.



FEATURES

- Can be safely used inside or outside.
- Produces a better and cleaner cast when applied on pre-stressed and precast concrete forms.
- Cuts stripping time to an absolute minimum
- Effectively minimizes concrete buildup on pavers, R/M trucks, mixers, spreader-finshers, buggies, chutes, and other equipment.

PACKAGE: 25Litres keg, 210 Litres

CONCRETE DISSOLVER

Costar Concrete Dissolver is a combination of acid based material, corrosion inhibitors and dispersing agents specifically designed for use as concrete remover, cleaning and etching agent.



FEATURES

- Rapid concrete etching action
- No corrosive action with glass, plastic, rubber and most base metals
- Cleans hardened concrete from tools and mechanical equipment

PACKAGE: 5 litres and 20 litres keg

COSTAR FORM 200

COSTARFORM 200 is composed of mineral oil-based product, which provides quick easy and clean release of concrete forms.



FEATURES

- VOC compliant
- Ready to use, requires no additional mixing.
- Can be safely used inside or outside.
- Produces a better and cleaner cast when applied on pre-stressed and precast concrete forms.

PACKAGE: 25 litres keg, 210 Litres

COSTAR DUSTPROOFER

Costar Dust-proofer is a ready to use low viscosity dustproofing liquid for concrete floors, paths and driveways. It is suitable for used both internally and externally



FEATURES

- Easy to use
 - Permanent dustproofed and hardened concrete finish
 - Improves wear resistance.
- Reduces permeability

COVERAGE

3-6m² per liter depending on substrate conditions

PACKAGE: 5 litres, 20 litres keg





CONCRETE CURING AGENT

COSTAR CURE 10

Silicate-based coating designed for curing and sealing of new concrete and existing concrete.

BENEFIT

COSTAR CONCRETE CURE 10 is a high water resistant clear or white coating designed for curing freshly placed concrete and sealing all types of concrete surfaces.

COVERAGE

Coverage of 200 ft²/gal (4.9 m²/L).

PACKAGE: 5, 20 litres keg and 210 litres drum



COSTAR CURE 20

Water Based Concrete Curing Compound which is formulated from hydrocarbon resins for curing and sealing both new and existing concrete.

BENEFIT/APPLICATION

Costar Concrete Cure 20 is high water resistant coating designed for curing of both new and existing concrete. When properly applied, it produces a premium-grade film, which optimizes water retention resulting in hard dense concrete. It also minimizes hair checking, thermal cracking, dusting, and other defects.

COVERAGE

200ft²/gal (4.9m²/L)

PACKAGE: 5,20, litres keg and 210 litres drum



COSTAR CURE 30

Acrylic-based Coating Designed for Curing and Sealing New Concrete and Sealing Existing Concrete.

BENEFITS

- Costar Cure 30 helps to improve the compressive strength of concrete significantly
- Improved tensile strength
- Excellent resistance to cracking and surface crazing.
- Improves resistance to abrasion and the corrosive actions of salts and chemicals.

COVERAGE

Costar Cure 30 covers approximately 5m per liter, exact coverage depends on the concrete condition

PACKAGE: 5, 20 litres keg and 210 litres drum



COSTAR CURE 40

Costarcure 40 is ready to use, non-yellowing acrylic polymer based curing and sealing compound formulated from special acrylic polymers and quick-evaporating solvents that effectively cures and seals freshly placed concrete.

BENEFITS

- Ready to use, non-yellowing VOC compliant curing compound
- Costarcure 40 provides an attractive, high-gloss finish that enhances the natural appearance of the concrete.
- It also provides a tough, durable, uniform, breathable, film finish on exterior concrete surfaces.

COVERAGE

Approximate coverage is 300 – 600 ft.2/gal. Coverage is approximate and may vary depending on surface finish/texture, concrete condition, climatic conditions, etc.

PACKAGE: 20 Litres, 210 Litres





EXPANSION JOINT SEALANT

It is imperative to install the proper kind of concrete joint sealant to protect the structure from moisture damage caused by rain, wind, gravity, capillary force, and surface tension. Costar Expansion Joint Sealant will protect the joint from damage caused by heavy equipment being driven and/or rolled over the expansion joint, chipping and cracking the edges, which eventually leads to concrete joint failure.

To solve many of these problems, we have developed tailor-made and innovative solutions which fits into almost all types of concrete construction project.

COSTAR EXPANSEAL 100

Costar Expansel is one component polyurethane expansion joint sealant suitable for both vertical and horizontal joint sealing.



BENEFITS/APPLICATION

- Easy application
- Resistant to chemicals.
- Permanently waterproofs after curing
- Over paintable
- High sagging resistant due to its thixotropic properties
- Sealing of expansion joints both vertically and horizontally
- It is suitable for waterproofing of water tanks and swimming pools joints exposed to chemicals.
- Concrete panels joints, Precast panels, Concrete steel or any other substrates, Irrigation channels, Roof and terraces joints.

COVERAGE

Coverage depends on the depth and width of the joint

PACKAGE: 600cc Sausage

COSTAR EXPANSEAL 200 - PG/GG

Two Component Polysulphide Sealant for Vertical and Horizontal Sealing Application in Concrete.



BENEFITS/APPLICATION

- No unwanted remoistening
- Under temperature -20°C to 80°C , it performs well
- Excellent repair ability and bonding property
- Completely water tight when applied on concrete and other surfaces
- Sealing of joints in traffic areas such as. Bridges, roads and car parking areas
- Sealing of expansion, contraction & construction joints in building structure
- Glazing joints of window, door frame and curtain walls
- Sealing of cracks.
- It is available in pouring and gun grade

COVERAGE

Coverage depends on the depth and width of the joint

PACKAGE: Part A + Part B = 4Kg

COSTAR EXPANSEAL 300

Costar Expansel 300 is a two component self-leveling polyurethane sealant ideal for horizontal applications that allows continual movements of the structure caused by thermal changes without cracking.



BENEFITS/APPLICATION

- Easy application
- Fast cure and over paintable
- Self-leveling consistency
- Possesses permanent elasticity
- High adhesion strength
- Allows joint movement
- Used for sealing of horizontal joints both internal and externally
- Expansion joints between many different construction materials, Industrial floors, sidewalks and garages

COVERAGE

Coverage depends on the depth and width of joints

PACKAGE: Part A: 6Kg, Part B: 3Kg





DAMPNESS, VAPOUR REMEDIATION & CORROSION PROTECTION

Damp proofing keeps moisture out of a building where vapour barriers keep interior moisture from getting into walls. Moisture resistance is not necessarily absolute.

DAMPNESS & VAPOUR REMEDIATION

COSTAR DAMPMASER 10

Cementitious Injection Mortar



BENEFITS/APPLICATION

- Simple and fast application
- Does not require special injection pump
- Eliminate need for preliminary water tight sealing around injection holes.
- spillage virtually eliminated from the site
- Costar Damp Master can be used to treat rising damp in all masonry walls such as: Solid brick, cavity walls, rubble infill walls, etc.

Mixing: 3.5L to 4L/ 20kg Bag

PACKAGE: 20kg

COSTAR REPEL SP

Costar Repel SP protects the surface against rainwater penetration without changing the aesthetic appearance of the substrate. It is solvent free and water repelling.



BENEFITS/APPLICATION

- It can be exposed to Ultraviolet Light
- It is water repelling and protects the surface against penetration of rain water without changing the aesthetic appearance.
- It is suitable for use on all types of masonry including concrete brick, render and stone surfaces

CONSUMPTION: 0.5 liter/m² water per coat

PACKAGE: 20kg

COSTAR DAMPMASER 20

Injection Silane for Dampness



BENEFITS/APPLICATION

- Simple and fast application
- Does not require special injection pump
- Eliminate need for preliminary water tight sealing around injection holes.
- Water based and non flammable
- spillage virtually eliminated from the site
- Costar Damp Master 20 can be used to treat rising damp in all masonry walls such as: Solid brick, cavity walls, rubble infill walls, etc.

PACKAGE: 2kg & 5kg



CORROSION PROTECTION

ZINC PRIMER 10

Zinc Primer 10 is an Anti-Corrosion Primer for Steel Reinforcement

BENEFIT/APPLICATION

- Mixes with water only
- Extended pot life and contact time
- VOC compliant (solvent free)
- Resistant to penetration of water and chlorides
- Excellent workability with long pot life
- As an anti-corrosion, protective coating for steel rebar in concrete restoration.
- As a bonding agent for concrete repair mortars or fresh concrete.

MIXING

Mix 4.5 kg pail of Costar Zinc Primer 10 with 1.3 L of water

PACKAGE: 20Kg



ZINC PRIMER 20

Costar Zinc Primer 20 is a two component grey-coloured liquid based on metallic zinc and epoxy resins used as an anti-corrosion primer for exposed reinforcement steel bars.

BENEFIT/APPLICATION

- Two component and easy application
- Time saving - touch dry after 15 - 45 minutes
- Excellent protective barrier to the steel from further corrosive attack
- Costar Zinc Primer 20 is specifically designed for use as an anti-corrosion primer for exposed reinforcement steel bars.

PACKAGE

Component A: 3kg & B: 4.5kg





DECORATIVE MORTAR

Costar offer ranges of decorative mortar utilized for the detailing of structure surfaces with conventional building feel in living arrangements, lodgings, and proficient premises. They are utilized to give wonderful appearance to external walls.



COSTAR MORTAR 10

Costar Mortar 10 is a blended mix of Portland cement, sand and special additives specifically designed for plastering works on block walls, concrete surfaces, bricks and general filling up internally and externally.



BENEFITS/APPLICATION

- Suitable for creating a leveled surface on a very uneven masonry or concrete.
- Suitable for smoothing walls and ceilings before final treatment is applied.
- Internal and External application
- Suitable for fillings holes and irregularities, leveling and covering ceilings during renovation work.
- Repairing, leveling and undercoating old rendered surface.

CONSUMPTION

Approximately 1.3Kg per m² per mm

PACKAGE: 20Kg

COSTAR MORTAR 20

Costar Mortar 20 is cement based plaster mortar reinforced with special additives and polymers specifically designed for interior and exterior coating of thermal insulating plates, allowing easy application, resistant to water, impact and weather conditions with a long usage and correction period



BENEFITS/APPLICATION

- Fireproof, durable and long lasting
- Resistant to water, frost, moisture and severe weather conditions
- Minimized risk of cracking
- Indoor and outdoor facades

CONSUMPTION

Approximately 4Kg per m²

PACKAGE: 20Kg

COSTAR MORTAR 30

Costar Repair Mortar 30 is a one-component, smooth finish easy to use cementitious patching mortar ideal for the repair or re-profiling of concrete.



BENEFITS/APPLICATION

- Easy to prepare and quick to apply.
- Patching and repair of masonry blocks, curbs, steps, sidewalks, and more, both for external and internal purposes
- Used as plaster on walls and panel system
- Ideal for restoration of honeycombed, spalled or otherwise damaged concrete

MIXING

Costar Mortar 30 should be mixed in the proportions of 20kg of powder to 4 - 5 litres of water

PACKAGE: 20Kg

COSTAR MORTAR 50

Costar Plastering Mortar is a blended mix of Portland cement, sand and special additives specifically designed for plastering works on block walls, concrete surfaces, bricks and general filling up internally and externally.



BENEFITS/APPLICATION

- It is Suitable for creating a leveled surface on a very uneven masonry or concrete.
- Suitable for smoothing walls and ceilings before final treatment is applied.
- Suitable for fillings holes and irregularities, leveling and covering ceilings during renovation work.
- They are also suitable for direct application to mineral-based
- substrates such as gypsum boards or plastered surfaces.
- Repairing, leveling and undercoating old rendered surface.

CONSUMPTION

Approximately 1.4 kg per m² per 1 mm thickness

PACKAGE: 20Kg

COSTAR WALL PUTTY

Costar wall putty is specially developed as a base coat to provide smooth finish on plastered surface, and hence ideal for paint application because paint saving can be up to 50%. It contains finest quality minerals, polymers, white cement and pigments.



BENEFITS/APPLICATION

- Ease of use.
- Perfect Solution for smooth finish
- Avoid frequent repainting.
- Highly durable and water resistant
- Interior and exterior uses.
- Protects against wind rain
- To be used on concrete, concrete ceilings, rendered wall, hollow block, precast walls > in general any cementitious surface

COVERAGE

Maximum two coats (Layers) of Costar Wall Putty.

1st coat - 1.5mm, 2nd coat - 1.0mm dependent on nature of substrate

PACKAGE: 20Kg



INSULATION

Costar thermal Insulation series are constantly endorsed as the most astute decision for comfortable, vitality effective private, industrial and commercial spaces.

COSTARTHERMAL B12

Low Density High Performing Spray Insulation



BENEFITS

ECostarthermal B12 is a low density based polyurethane foam recommended for roofing and other exterior insulation because it is applied in a continuous manner, in addition to thermal resistance properties.

Costarthermal B12 is recommended for use as insulation foam on exterior roof insulation, interior under ceiling roof insulation, wall and floor Insulation, cold room Insulation

PACKAGE: 210 litres drum

COSTARTHERMAL B24

High Density Spray Insulation

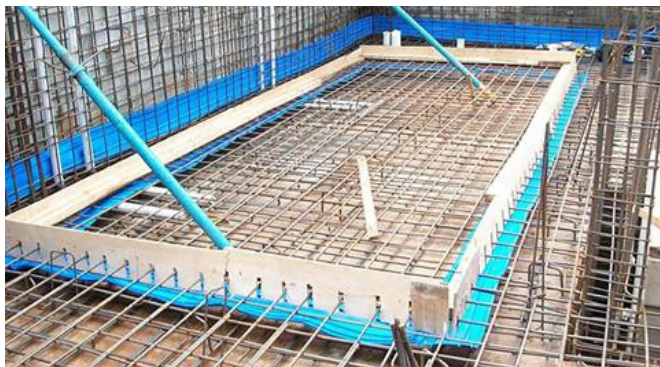


BENEFITS

Costarthermal B24 is a high density based polyurethane foam recommended for roofing and other exterior insulation because it is applied in a continuous manner. Costarthermal B24 is a highly durable and lasting insulation product. It extends building life

Costarthermal B24 is recommended for use as insulation foam on exterior roof insulation, interior under ceiling roof insulation, wall and floor Insulation, cold room Insulation.

PACKAGE: 210 litres drum



WATERSTOP

Costar has both hydrophilic swellable and PVC waterstops with demonstrate history for being of premium quality and a cost effective solution for water containment needs.

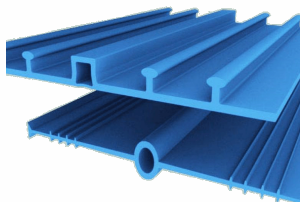
COSTAR PVC WATERSTOP

High Performance PVC Waterstop

COSTAR PVC Water-stop is typically used for joints which occur in both water retaining and water excluding structures such as Water treatment plants, Swimming pools, Reservoirs, Tunnels, Basement areas, Retaining walls, Pits

Costar PVC Water-Stop Conform to relevant international, it has long roll lengths to reduce the amount of welding /joining on site.

PACKAGE: 25lm per roll



COSTAR SWELLABLE WATER-STOP

Costar Swellable Waterstop is hydrophilic swelling waterstop which exhibits excellent durability and water sealing capacity. It expands as it absorbs water and fills concrete joint gaps conforming to the gap variation, ensuring excellent sealing. It is suitable for use in Vertical and horizontal cast-in-place concrete joints where limited movement is expected. Costar swellable waterbar is ideal for new concrete structures or between new and existing concrete.

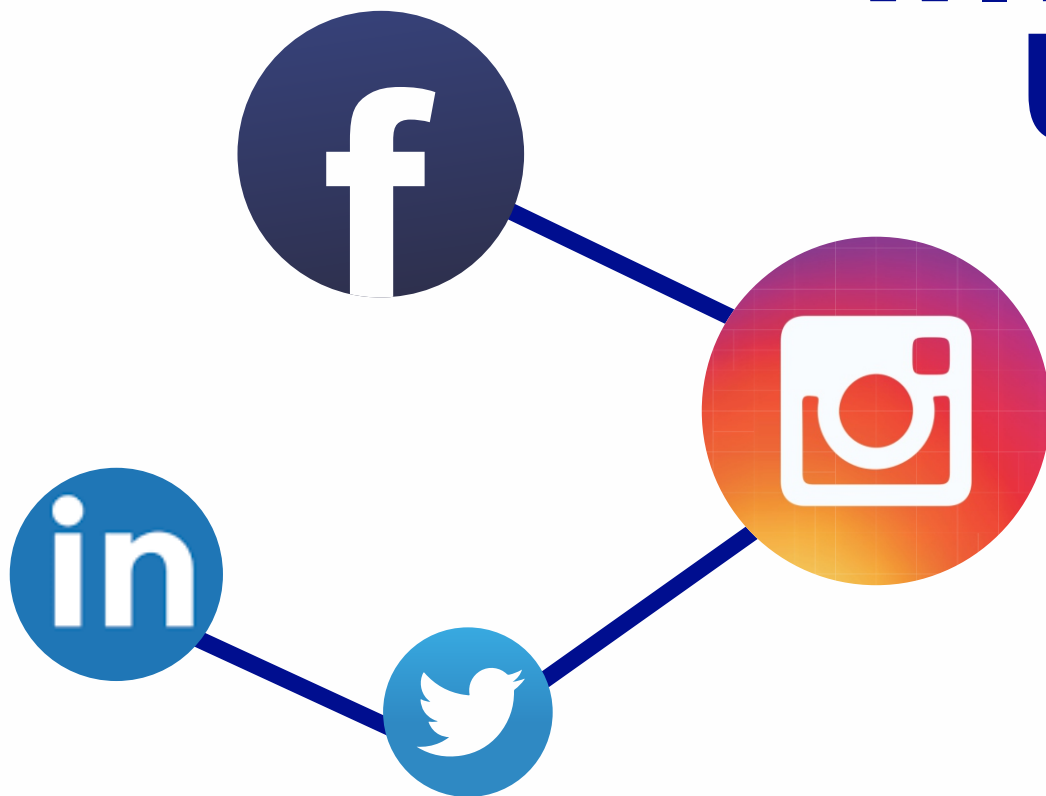
PACKAGE

Black: 12.5lm per roll
Red: 40lm per roll





CONNECT WITH US



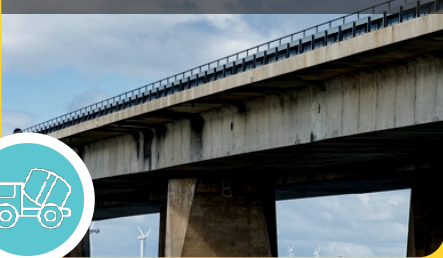
Instagram: @costarchem_nigeria Twitter: @Costarchem
Facebook: Costarchem Nigeria LinkedIn: Costarchem Nigeria

Website: www.costarchem.com

Next Generation Solutions

For Today's Construction

Concrete Admixtures



Insulation



Expansion Joint Sealant



Waterproofing Admixtures



Tiling Solution



Repair And Bonding Agent



Flooring Solutions



Waterproofing Membrane



Structural Grout



Waterstop



Surface Treatment



Decorative Mortar



Call Us

+925 434 8314
+234 818 2435 381
+234 818 2435 430

E-mail Us

info@costarchem.com

Office Address

5041 Mountaire Area,
Antioch, California, USA.